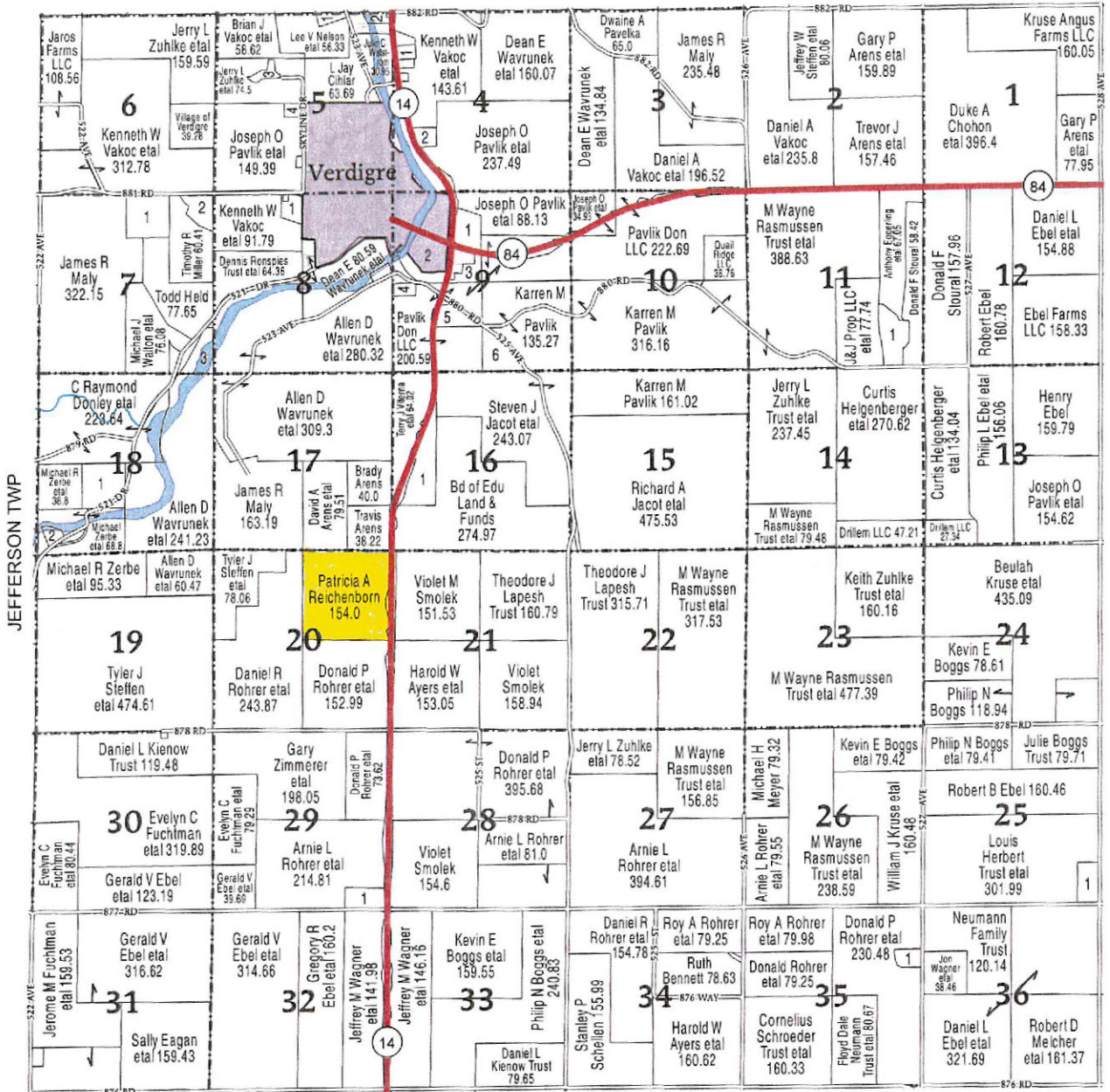


(Landowners)

SPARTA TWP



MILLER TWP

**VERDIGRE TOWNSHIP**

**SECTION 4**

- 1 VERDIGRE STOCKYARDS LLC 5.3
- 2 VERDIGRE CEMETERY ASSN 7.93

**SECTION 5**

- 1 TUSHA, KENNETH R ETAL 5.81
- 2 BOHEMIAN ONE STOP LLC 5.57
- 3 MOUNTAIN TOWER & LAND LLC 6.14
- 4 ST WENCESLAUS CATHOLIC CHURCH 5.11

**SECTION 7**

- 1 HEAVENLY VALLEY LOG HOMES LLC 38.66
- 2 VAKOC, KENNETH W ETAL 17.24
- 3 WAVRUNEK, ALLEN D ETAL 18.91

**SECTION 8**

- 1 IVES, STEPHEN E ETAL 11

**SECTION 9**

- 1 GEHRING, RUSSELL ETAL 17.91
- 2 VILLAGE OF VERDIGRE PARK 39.36

- 3 OLERICH, JEFFREY R ETAL 10.03
- 4 FORMAN, DENNIS R 5.87
- 5 PAVLIK, DEAN E ETAL 13.79
- 6 FIRST SAVINGS BANK 24.3

**SECTION 11**

- 1 STOURAL, TERRY D 27.73

**SECTION 16**

- 1 MCGREW, DAN C ETAL 39.65

**SECTION 18**

- 1 ZERBE, MICHAEL R ETAL 38.18
- 2 ZERBE, RYAN 5.33

**SECTION 25**

- 1 HERBERT TRUST, LOUIS E 18.47

**SECTION 29**

- 1 SMOLEK, VIOLET 17.87

**SECTION 35**

- 1 WAGNER, JONATHAN SCOTT 9.61

